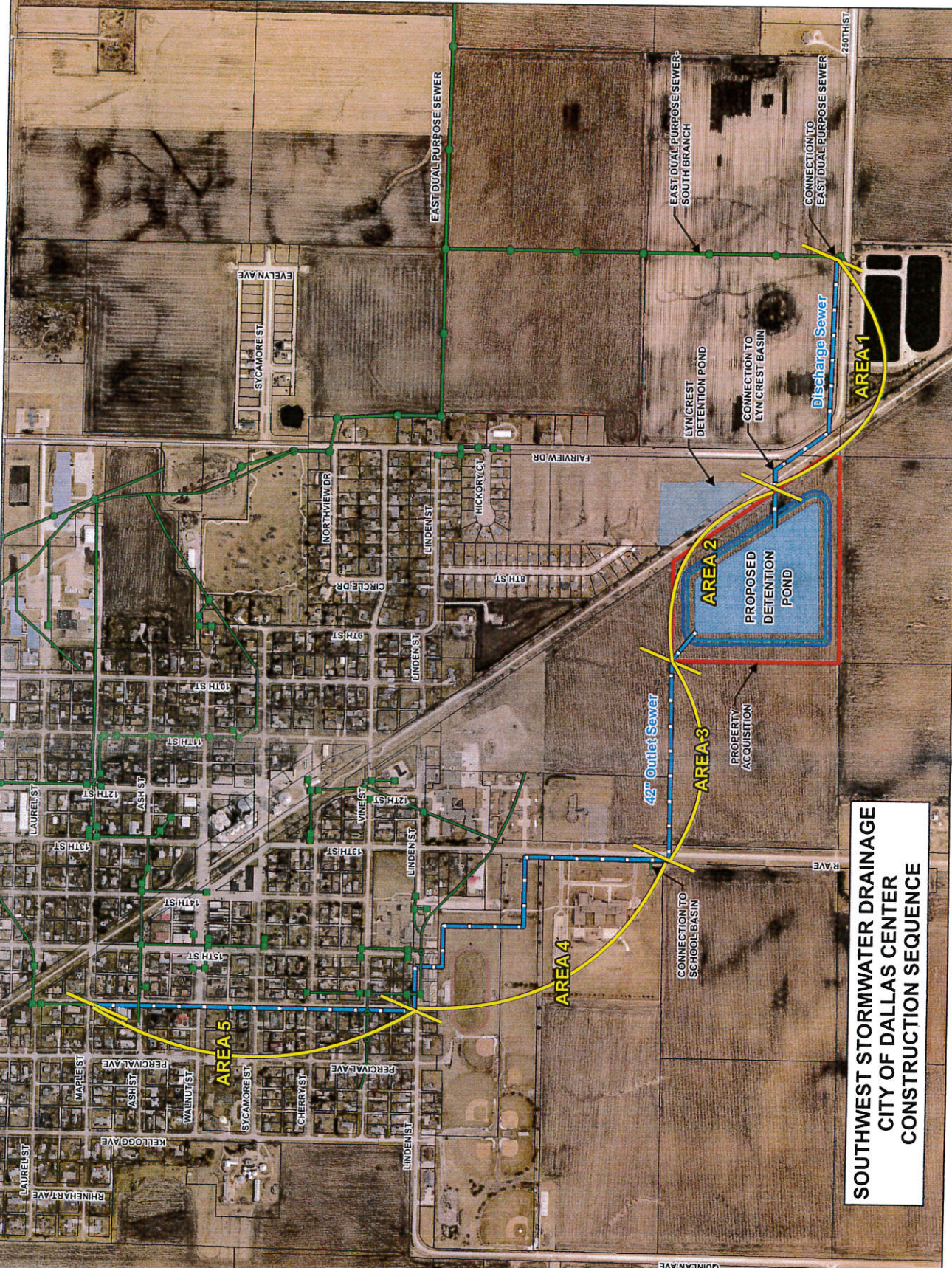


**LEGEND**  
 — EXISTING STORM SEWER  
 — PHASE 1 IMPROVEMENTS

**VEENSTRA & KIMM, INC.**  
 PROJECT NO. 12148  
 AUGUST 24, 2010

**SOUTHWEST STORMWATER DRAINAGE  
 CITY OF DALLAS CENTER  
 CONSTRUCTION SEQUENCE**



Labels on the map include: EAST DUAL PURPOSE SEWER, EAST DUAL PURPOSE SEWER SOUTH BRANCH, CONNECTION TO EAST DUAL PURPOSE SEWER, LYNCREST DETENTION POND, CONNECTION TO LYNCREST BASIN, Discharge Sewer, 250TH ST, FAIRVIEW DR, HICKORY CT, LINDEN ST, 8TH ST, CIRCLE DR, NORTHVIEW DR, SYCAMORE ST, EVELYN AVE, SYCAMORE ST, LAUREL ST, 10TH ST, 11TH ST, 12TH ST, 13TH ST, 14TH ST, 15TH ST, MAPLE ST, ASH ST, WALNUT ST, SYCAMORE ST, CHERRY ST, LINDEN ST, PERCIVAL AVE, KILGORE AVE, R AVE, QUINNLAN AVE, and 250TH ST.